



EMISSION PARTNER



EMISSION LIMITS OF TOMORROW
ARE ALREADY SAFELY UNDERCUT TODAY!

BENEFIT FROM OUR EXPERIENCE

above 30.000

produced catalysts

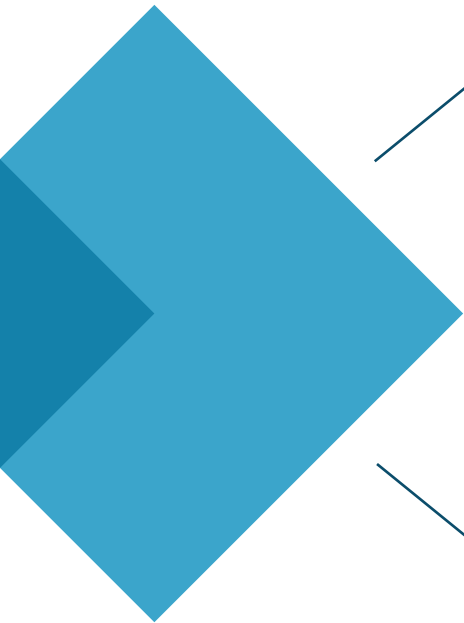
above 2.200

attended plants

above 1.250 MWe

with our exhaust gas aftertreatment





above 1.500

Emission measurements per year

above 30 Mio. t

CO emissions reduced

above 1.600 t

Formaldehyde reduced annually

TO MARKET LEADER IN SEVEN YEARS IN EXHAUST GAS AFTERTREATMENT



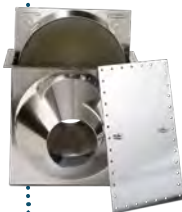
MAY 2010

Incorporation of
Emission Partner.



SEPTEMBER 2010

Completion of the first
Coating plant.
The first catalysts are installed on
biogas engines.



MAY 2012

Delivery of the first
Emission Partner catalytic con-
verter chamber, whose flange
spacing is customized.

DECEMBER 2012

The four hundredth biogas
catalyst leaves the plant. The
first sulphur-resistant
catalysts on biogas plants
without biogas desulphurisa-
tion to be delivered in 2011
will pass the second exhaust
gas measurement.

NOVEMBER 2012

Emission Partner will have its own
large stand at Bioenergy Decentral
for the first time.



MAY 2014

Emission Partner receives
the German Agriculture
Innovation Award for the
first 3-way SCR catalyst,
which reduces not only
NO_x but also CO and
formaldehyde.



NOVEMBER 2013

Emission Partner presents
the first sulfur-resistant SCR
catalyst system for biogas
plants at Agritechnica in
Hanover, which guarantees
stable compliance with NO_x
limits for the first time.

JULY 2014

Issue Partner receives the 2nd prize in the competition „Gründerpreis Nordwest 2014“.



NOVEMBER 2014

Emission Partner coats the two thousandth biogas catalyst and takes care of the thousandth exhaust gas measurement.



OCTOBER 2015

A world first:
Formaldehyde Rapid Tester



2016

The SCR system „Emission Blue“ is successfully installed on a vegetable oil engine.



NOVEMBER 2015

Winner of the Start Green Award 2015.



ENDE 2016

The 20,000th catalyst leaves the factory.

OCTOBER 2017

Emission Partner and the SCHNELL Motoren GmbH decide on cooperation and develop the catalyst exchange system.

MAY 2018

The 30,000th catalyst is completed.

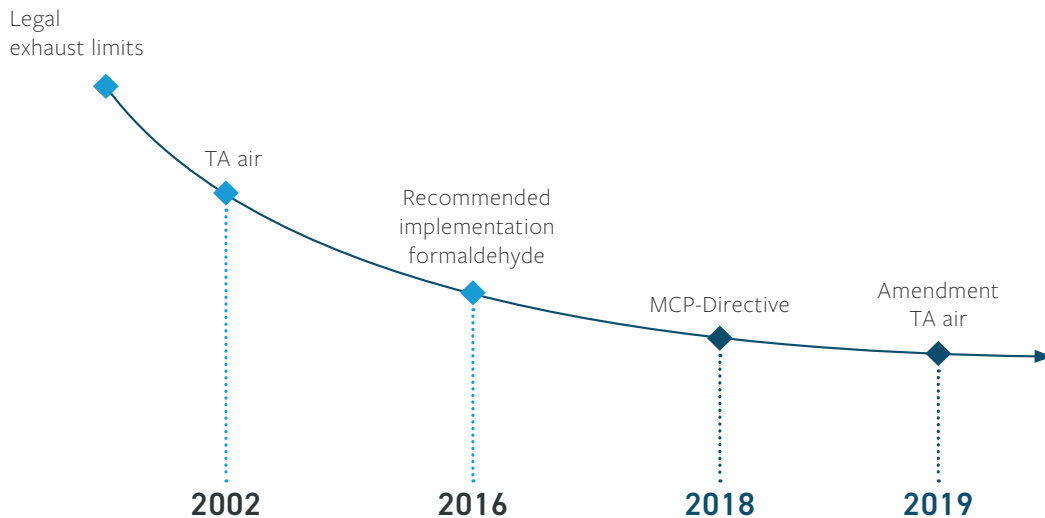


2017

Development of the silencer SCR unit.
Integrated exhaust system consisting of silencer and SCR exhaust aftertreatment in cooperation with Martin Adam GmbH.

EMISSION CHALLENGES COPE WITHOUT PROBLEMS

The **emission limits for gas engines** will be significantly lowered in the coming years and present operators with new challenges. **Which exhaust gas aftertreatment systems are required for the newly planned engines and do existing plants have to be retrofitted?** We provide you with the details you need to pay attention to and offer you **a manufacturer-independent solution** for your emission challenge.

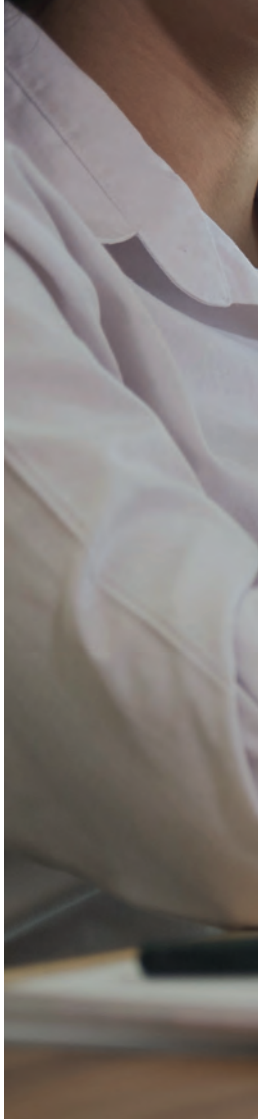




**CONTROLLING
EMISSIONS SAFELY**

FROM THE **IDEA** TO **RECYCLING** WE ARE YOUR **EMISSION PARTNER**

We are the first independent catalyst manufacturer to focus entirely on the **development, production and sale of catalysts for gas engines**. We cover **all value-added steps** of an emission project, from the **planning** of the exhaust gas aftertreatment to the **design, manufacture and installation** of the catalytic converters and the final emission measurement.





**PROJECT
LEADERSHIP**



**EMISSION
ENGINEERING**



PRODUCTION



ASSEMBLING



**EMISSIONS
MEASUREMENT**



RECYCLING

PROJECT LEADERSHIP

During a first visit, we measure the emissions actually generated and record the connection dimensions of your plant. Based on our experience from **more than 1500 projects per year**, we advise you on internal engine measures to **reduce emissions**. We then define the appropriate catalyst technology, taking into account the fuel gas, flow and exhaust back pressure, and submit you an offer for the entire project support up to the successfully passed **emission measurement at a fixed price**.





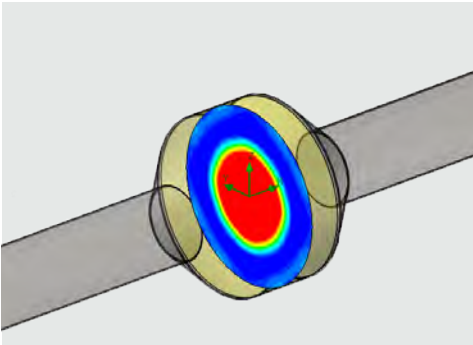
**THE RIGHT CATALYST
FOR YOUR PLANT**

EMISSION ENGINEERING

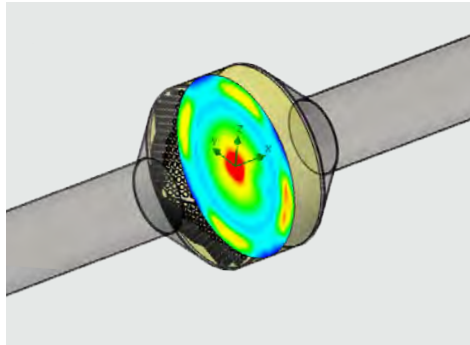
With the aid of **CFD analyses**, we can simulate the flow of exhaust gases onto the catalytic converters and carry out **important component optimizations** during the design process.

Emission Partner has developed a **suitable catalyst technology** for every combustion process and every fuel gas that has proven itself in practice. No matter which fuel gas you use, we can tell you which details you need to pay attention to.

Example drawing in the CFD program:



Picture 1:
Commercially available universal catalyst with unfavourable flow.



Picture 2:
Same universal catalyst with improved flow.



LOW EMISSIONS
BEGIN IN
DEVELOPEMENT

EMISSION BLUE - THE CATALYST GENERATION, THAT ADAPTS TO YOUR NEEDS

Many operators are overwhelmed by the **opaque legal situation**. First the **formaldehyde limits are lowered**, then the **nitrogen oxide limits**.

Emission Partner has developed the new „Emission Blue“ catalytic converter system to meet this challenge. This sulfur-resistant catalyst system converts formaldehyde and, in combination with a **later retrofittable urea dosing system**, then additionally nitrogen oxides.

Step 1: Formaldehyde

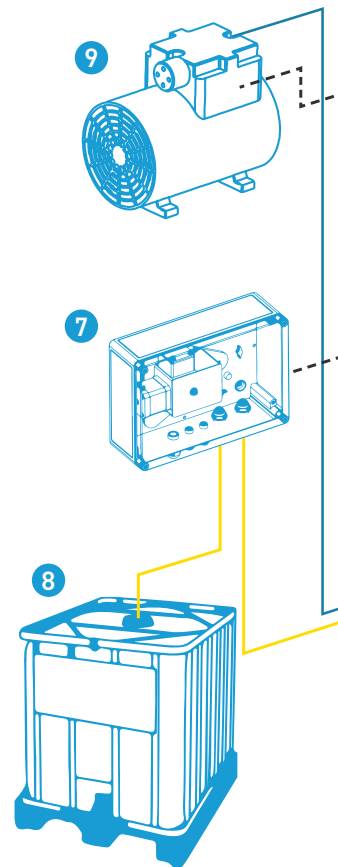
The SCR reactor safely reduces formaldehyde emissions below the limit value required by the formaldehyde enforcement recommendation.

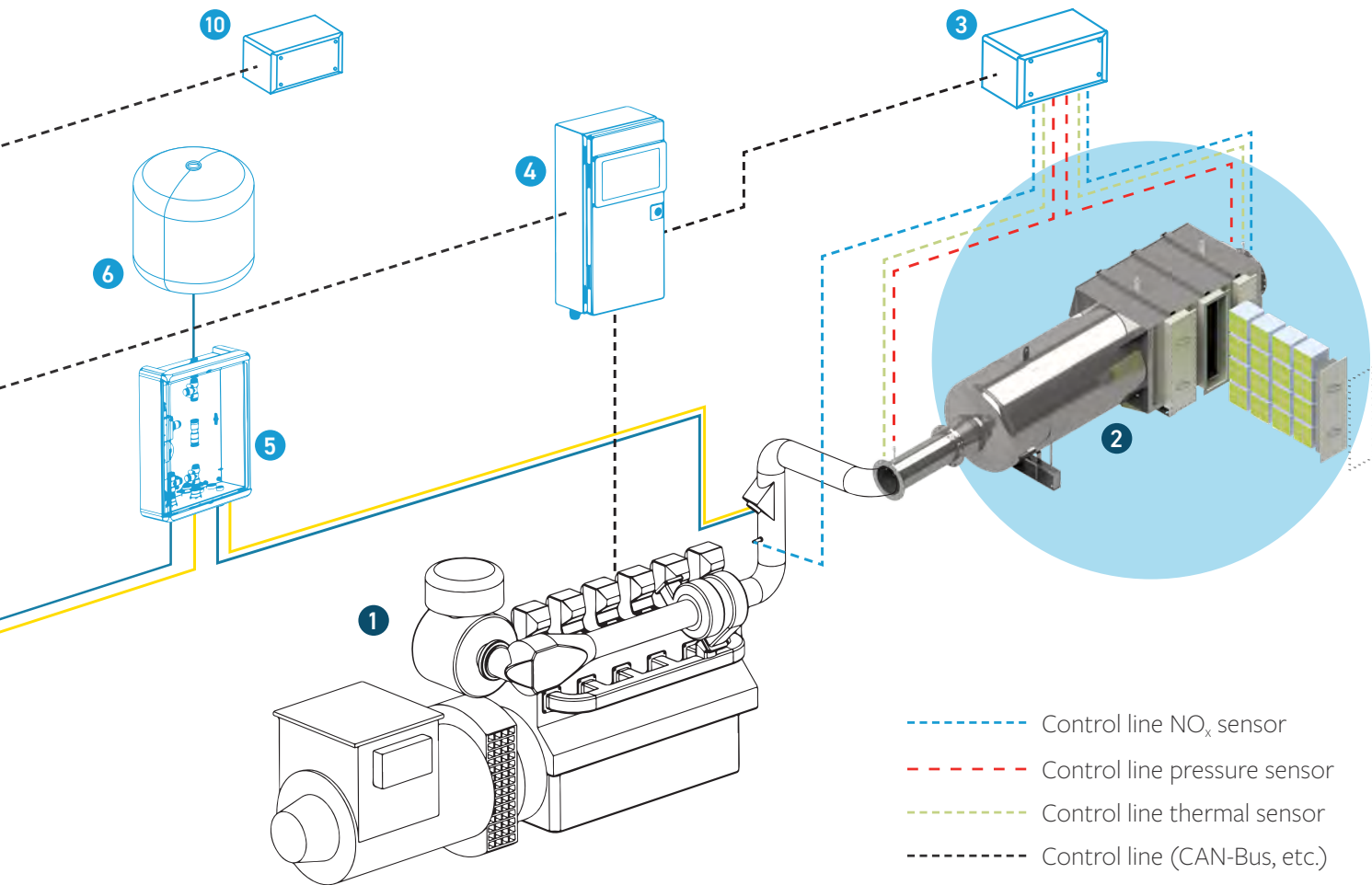
- 1 Engine with generator
- 2 SCR silencer

Step 2: Nitrogen oxides

If the nitrogen oxide limit values are further lowered in the coming years, nitrogen oxide emissions can be reduced by up to 95% by retrofitting a urea dosing system.

- 3 Sensore module
- 4 Control with display
- 5 Ventile module
- 6 Accumulator
- 7 Pumpe module
- 8 AdBlue®-IBC
- 9 Booster
- 10 Relay module





PRODUCTION

From the **winding** of the metal substrates to the **coating** and **welding** on of components such as flanges and cones, we manufacture each catalyst **100% in-house** according to a **certified management system**.





**GREATEST
DEPTH OF PRODUCTION
IN THE INDUSTRY**

PRODUCTION

Since we do not depend on any pre-suppliers for the production of your catalytic converters, we can adapt to your **individual requirements** and manufacture your catalytic converter in the way it is **best used** in your exhaust system. We can also successfully implement time-critical projects due to our **unique vertical range of manufacture**.

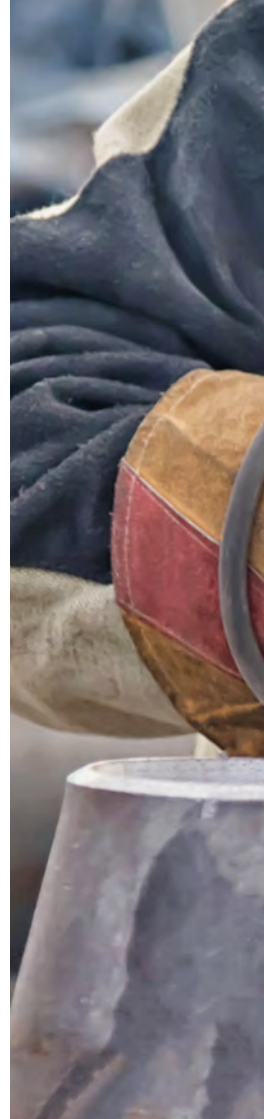




UNCOMPROMISING
DELIVERY CAPABILITY

ASSEMBLING

Together with our plant construction partners, we **install the catalysts** in your plant, including **welding and insulation work**.





EVERYTHING FROM
A SINGLE SOURCE

EXHAUST MEASUREMENT

A **successful emission measurement** with a corresponding report as a template for the supervisory authority rounds off a successful emission project and is part of our scope of supply.

Through cooperation with more than ten accredited measuring institutes throughout Germany, **we prepare you optimally for your exhaust gas measurement.**

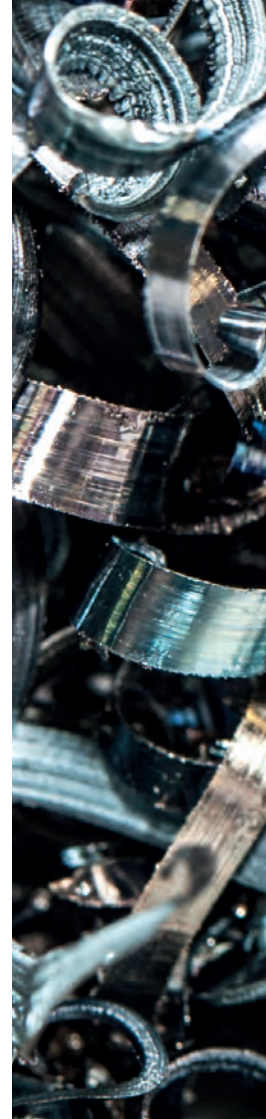




COMPLIANCE WITH THE
LIMIT VALUES GUARANTEED

RECYCLING

Recycling means thinking the life cycle of the catalytic converter through to the end. From the **old catalysts**, which we crush and melt down, we recover the **precious metals** that we immediately reuse for the **new catalysts**. That is why we will pay you for your old catalysts at very attractive conditions. **Talk to us!**





THE CIRCUIT

CLOSES

EMISSION PARTNER - EUROPE-WIDE

We develop catalytic converters and take care of the exhaust aftertreatment of **more than 2,200 plants throughout Europe**. We build catalysts for the largest CHP engine manufacturers and CHP plants operator on the market. Municipal utilities and other plant operators have also relied on the competence and expertise of Emission Partner for many years.

Count yourself among them!

● **Emission Partner main facilities**

● **Emission Partner sales offices**

Location Saterland-Ramsloh

Emission Partner GmbH & Co. KG
Industriestraße 5
26683 Saterland-Ramsloh

Telefon: +49 4498 92 326-0
Telefax: +49 4498 92 326-112
E-Mail: info@emission-partner.de



Location Hanover

Emission Partner GmbH & Co. KG
Karl-Wiechert-Allee 66
30625 Hannover

Telefon: +49 4498 92 326 - 26
Telefax: +49 4498 92 326 - 112
E-Mail: info@emission-partner.de

Location Italien

Emission Partner GmbH & Co. KG
Via Dei Campi della Rienza
39031 Bruneck, Bozen

Telefon: +39 327 857 66 67
E-Mail: marco.pareschi@emission-partner.it



WWW.EMISSION-PARTNER.DE

info@emission-partner.de

HEAD OFFICE and PRODUCTION

Emission Partner GmbH & Co. KG
Industriestraße 5
26683 Saterland-Ramsloh
Telefon: +49 4498 92 326 - 0

MARKETING and SALES

Emission Partner GmbH & Co. KG
Karl-Wiechert-Allee 66
30625 Hannover
Telefon: +49 4498 92 326 - 26